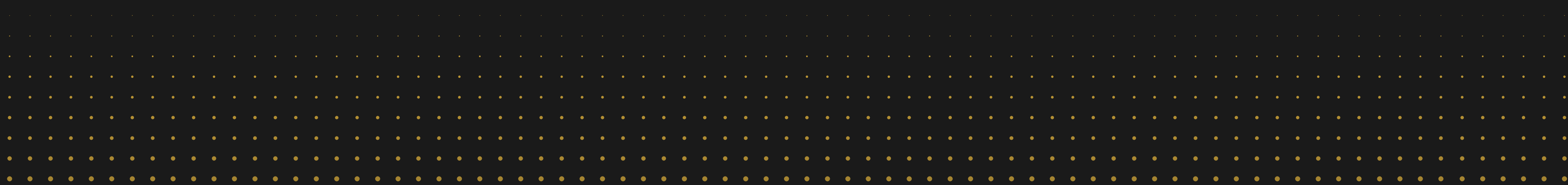


BLACK GOLD
IGNITE





AGENDA

The Working Committee

The Vision & Mission

The Core Values

The Operations Committee

Summer Timeline

Introduction

Next Steps

Contact Information



THE WORKING COMMITTEE

In early February a joint committee between BAHA and LMHA was created to organize a new direction for female minor hockey in the Black Gold area

- VP Female (LMHA) Candis Wood
- Female Director (BAHA) David Flemming
- Vice-President of Off Ice Operations (BAHA) Roxanne Robb
- Ice Coordinator (LMHA) Rae-Lynn Spila
- Tournament Director (BAHA) Emily Samson
- Female Development Coordinator (LMHA) David King





THE VISION

To unite girls within the Black Gold boundaries to create a robust, competitive hockey community. We aim to foster a love of sport and a high regard for hockey by providing a welcoming environment where all girls feel included, valued, and respected.

THE MISSION

We are dedicated to providing a program that sees all girls playing to their full potential. We will celebrate the achievements of women in hockey at all skill levels.

We honour the many reasons girls participate in sport and will provide safe, supportive and competitive opportunities for girls to learn and grow.

We will create pathways for girls to become strong leaders and lifelong athletes as modelled by coaches, volunteers, and officials.

THE CORE VALUES



**INCLUSION &
BELONGING**



**ATHLETE CENTERED
DEVELOPMENT**



**LEADERSHIP
DEVELOPMENT**



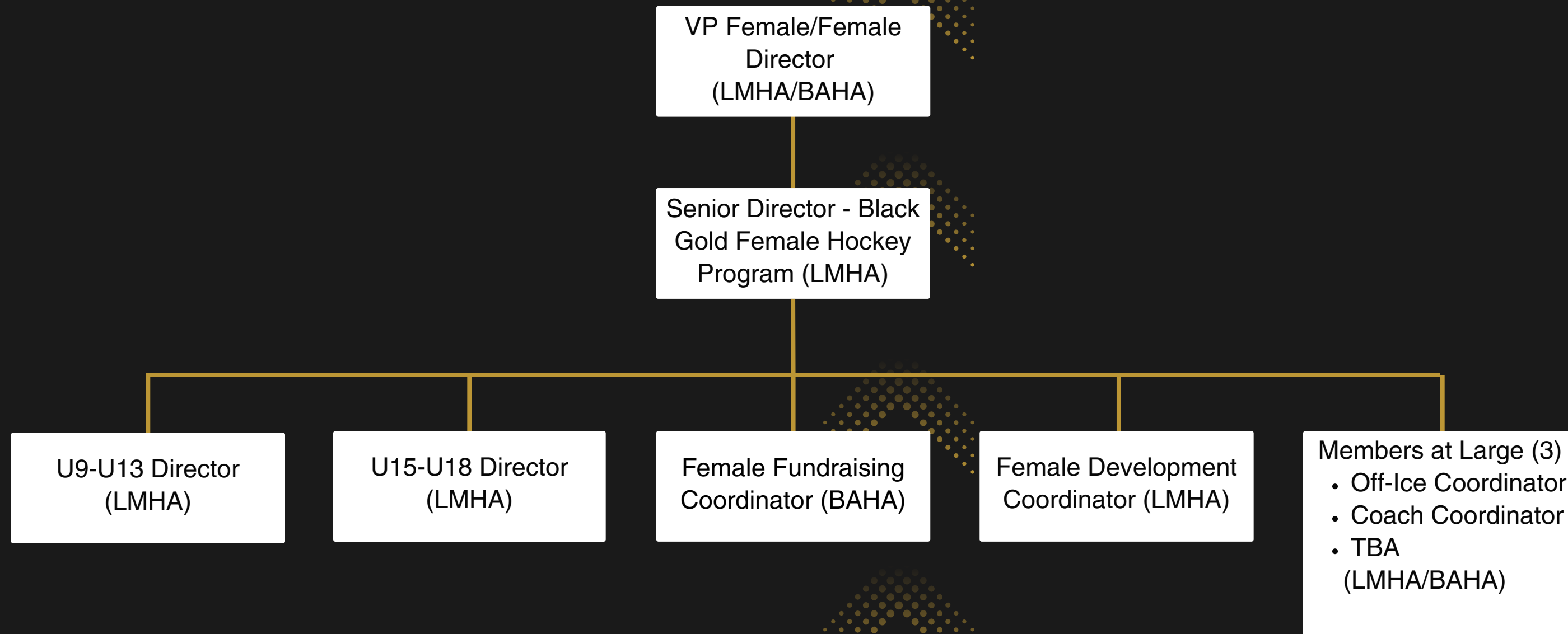
**ACCOUNTABILITY
AND RESPECT**



**SAFETY &
INTEGRITY**

COLLABORATION BETWEEN ASSOCIATIONS

BLACK GOLD FEMALE OPERATIONS COMMITTEE



SUMMER TIMELINE

Black Gold Ignite Esso Fun Days

JUNE 5 2026

Black Gold Ignite Pre-Season Training Camp

AUGUST 25-27 2026

JUNE 1 2026

Registration Opens

SUMMER 2026

Black Gold Ignite Summer Momentum Development Camp

WE ARE
PLEASED TO
INTRODUCE







BLACK GOLD IGNITE FAQ



HAVE SUGGESTIONS CONTACT:



VP FEMALE - CANDIS WOOD

Email: vpfemale@lmha.ab.ca



FEMALE DIRECTOR - DAVID FLEMMING

Email: dfleming@baha.ab.ca

HOCKEY CANADA
PRESENTS

THE

BLACK GOLD

IGNITE



A FREE LEARN TO PLAY
HOCKEY EVENT

DATE: JUNE 5TH @ 7:45 PM

OPEN FOR NEW TO HOCKEY
FEMALE PLAYERS, AGES 4+

INTRODUCTION TO THE
BRAND NEW PROGRAM:
BLACK GOLD IGNITE

TREATS, PRIZES AND SWAG!!!



SCAN TO REGISTER

For Questions Please Email
femaledevelopment@lmha.ab.ca



REGISTRATION COST: \$400
CLOSES MAY 31

BLACK GOLD IGNITE SUMMER MOMENTUM CAMP



A 6-week development program designed to launch the Black Gold Female Development pathway. It delivers a complete athlete experience, combining skating, hockey skills, goaltending, and off-ice conditioning. Focused on age-appropriate training and led by local instructors, the program provides high-quality, cost-effective off-season development for Black Gold female athletes. Limited spots available.

ON-ICE • U9-U13 (1ST YEAR)/U13 (2ND YEAR)

JUNE 3, 2026 • 5/6:15 PM
JUNE 10, 2026 • 5/6:15 PM
JUNE 17, 2026 • 5/6:15 PM
JULY 29, 2026 • 5/6:15 PM
AUGUST 5, 2026 • 5:30/6:45 PM
AUGUST 12, 2026 • 6:45/8 PM

OFF-ICE • ALL TOGETHER

JUNE 4, 2026 • 6 PM
JUNE 11, 2026 • 6 PM
JUNE 18, 2026 • 6 PM
JULY 30, 2026 • 6 PM
AUGUST 6, 2026 • 6 PM
AUGUST 13, 2026 • 6 PM

COGNITIVE DEVELOPMENT
THREE SESSIONS TO BE ADDED

Register on Ramp through LMHA website or by the QR code



Black Gold Ignite – FAQ

Program Overview

What is Ignite?

The Black Gold Ignite program is a partnership between Leduc Minor Hockey Association and Beaumont Amateur Hockey Association, creating a dedicated female hockey pathway in the region for age divisions U9 thru U18..

It differs from traditional models by combining player pools across communities to form sustainable teams focused on long-term development, confidence, and a positive environment.

What does “tiered program” mean?

Players are grouped by skill, experience, and readiness to ensure appropriate challenge and development at every level.

Development vs. competition?

Development is the priority (skills, hockey IQ, confidence), supported by structured league play and competition aligned to each tier.

Partnership Benefits

Why combine Leduc and Beaumont?

- More stable team formation
- Stronger competition within tiers
- Expanded development opportunities

Will players still represent their community?

Yes. Ignite is a shared model—players remain connected to their home association while competing within a regional female stream.

Player Pathway & Commitment

Does Ignite support AA/AAA progression?

Yes. The program builds foundational skills, game understanding, and confidence required for advancement.

Players benefit from:

- Progressive skill development
- Increased pace of play
- Exposure to structured systems

Advancement ultimately depends on individual performance and external evaluations, but Ignite is designed to prepare athletes for those opportunities.

What is the expected commitment?

Varies by tier, but generally includes:

- Regular practices and games
- Tournaments/exhibition play

Higher tiers may include:

- Additional ice time and development sessions
- Increased competition
- Additional “level-up” fees (Tournament and Extra ice costs calculated per team)

Can players participate in other programs?

Potentially limited due to scheduling and Hockey Alberta guidelines. Ignite is intended as the primary program.

Logistics

Where are ice times held?

Shared between Leduc and Beaumont, with potential use of surrounding communities (Millet, Thorsby, Nisku).

Travel expectations?

Comparable to other regional programs; mostly local league play with some travel for tournaments.

Scheduling approach?

Designed for consistency and balance, with consideration for school and family commitments.

Coaching & Development

What coaching can players expect?

Qualified coaches aligned with a development-first philosophy:

- Skill progression
- Positive communication
- Inclusive environment

Female mentorship and balanced community representation are priorities.

Additional development opportunities?

May include:

- Skill sessions
 - Position-specific training (including goalies)
 - Power skating
-

Financial Overview

What do fees include?

- Ice time
- Development programming
- Team operations

Additional team costs (tournaments, travel, apparel) are managed at the team level.

Payment structure (summary):

- 50% at registration, 50% by Sept 1 (early/standard)
- Late fees apply after July 15
- Full payment required after Sept 1
- Installment options available

DIVISION	2026/27 BASE FEES
U18 (Co-ed & Female)	\$925
U15 (Co-ed & Female)	\$800
U13 (Co-ed & Female)	\$775
U11 (Co-ed & Female)	\$725
U9 (Co-ed & Female)	\$575

Financial assistance?

Available through LMHA programs: JumpStart for Kids and KidsSport.

Registration

All athletes must be registered in Leduc. Please fill out the following player movement form and submit to your Registrar ASAP to get the process started early

<https://www.hockeyalberta.ca/uploads/source/Forms/2526PlayerMovementFillable.pdf>

All outside athletes will be put on a waitlist. Please select payment by cash when registering.

Please note: There will be no raffle or start up of team funds. All team accounts will be run as per LMHA rules and regulations.

***** **REGISTRATION OPENS JUNE 1st** *****

Evaluations

- Third-party evaluations hosted in Leduc in late August / September

Roster Management

- Max roster: 20 players
- Low registration: minimum ~15, use of affiliates
- High registration: overflow directed to co-ed or other female programs

Goalie Development

- Association-based goalie clinics for all athletes
- Dedicated events (e.g., December All-Goalie Game, Try Goalie)

Tournaments & Exhibition Play

- Hosted across both associations
- Participation in events such as Wickfest (A teams)

Communication

- Led by Black Gold Female Committee (Senior Director & Division Directors)

Volunteer

- Volunteer credits will be tracked and logged by LMHA
- 2 credits per player 1 credit = \$400 or raffle table donation of \$200 = 1 credit
- Volunteer opportunities Will be available in both cities, Leduc and Beaumont but only offered by LMHA